

# Leading Global Provider for Ship Management Services



## OVERVIEW

'GFSM CO., LTD.' was established in 2022 to provide the 'TOTAL SHIP MANAGEMENT SERVICE' and 'SHIPPING BUSINESS SERVICE' with a good quality, systematic and safety control service to customers.

'GFSM CO., LTD.' aims to become a global Oil & Chemical leading shipping company based on its impressive heritage of pioneering success and growth experiences, and strives to grow through consistent partnerships with global customers.

## VISION OF THE COMPANY

Customer **Satisfaction**



## Mission

Customer Satisfaction !



## CEO MESSAGE

“Thank you to everyone  
who supports GFSM CO., LTD.”

GFSM CO., LTD, established in 2022, is a professional ship management company that boasts Total Ship Management.

At the same time as professionally managing oil and chemical tankers, By expanding our business area to include ship remodeling and new construction supervision, we are emerging as a global professional ship management company. Based on our many years of ship management know-how and talented human resources, we are becoming the best ship management company. We will do our best to improve.

'GFSM CO., LTD.' will do its best to fulfill its role as a specialized eco-friendly energy shipping company for the development of the Korean shipping industry, manifest corporate values, as well as sustainable life for humanity.

Your good friend, GFSM Co., Ltd. will continue to develop by considering our customers' success as our success.

**Thank you for your continuous support.**

Sincerely,

CEO JOONG MIN CHO

# OIL & CHEMICAL TRANSPORTATION

Reborn as the largest shipping company in Korea,  
We will advance toward a global Oil & Chemical transporting company.



Oil & Chemical

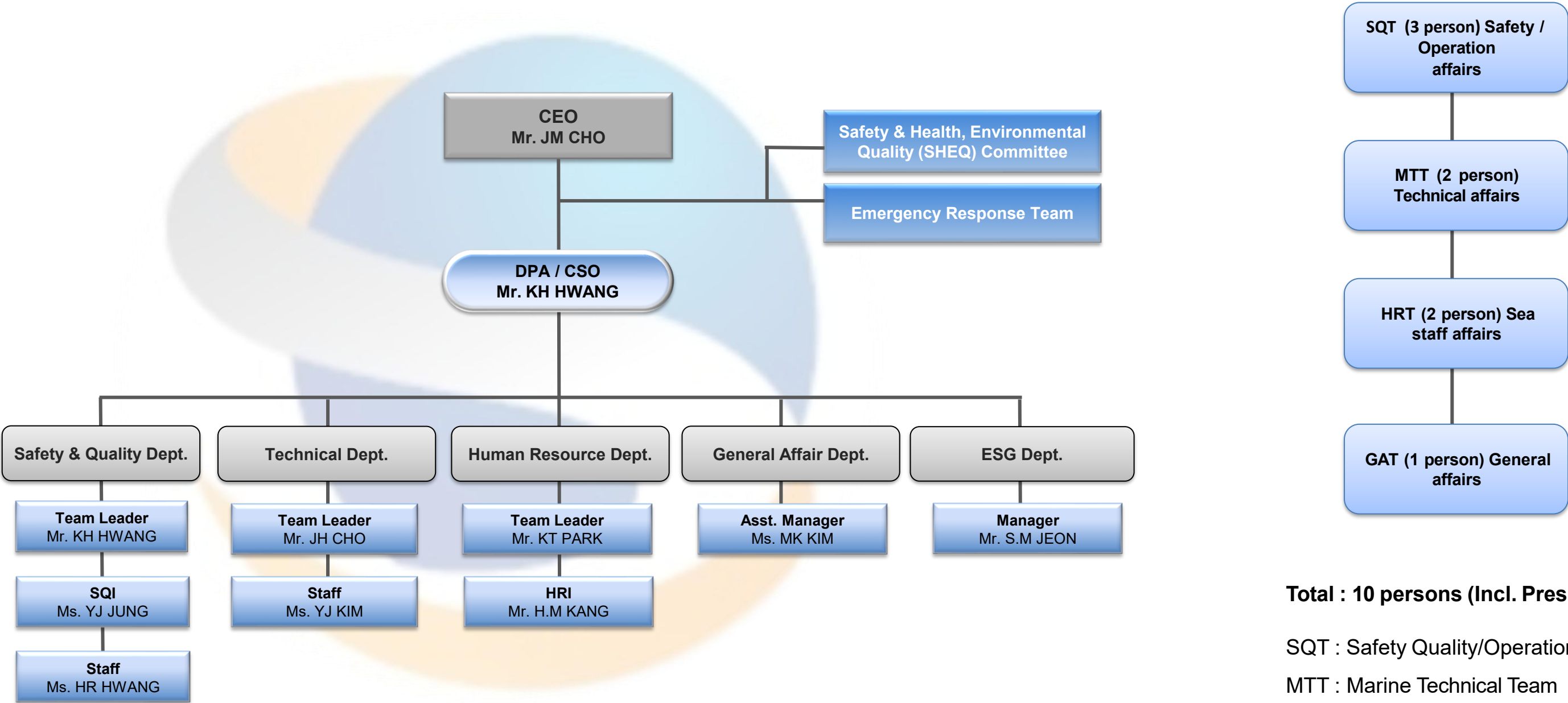


Fleet operation



Accidents

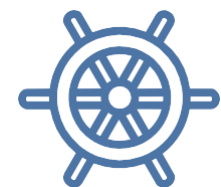
GFSM ORGANIZATION



**Total : 10 persons (Incl. President)**

- SQT : Safety Quality/Operation Team
- MTT : Marine Technical Team
- HRT : Human Resource Team
- GAT : General Affair Team
- ESG : Environmental, Social and Corporate Governance

# HISTORY & FUTURE PLAN



**2022**  
'GFSM CO., LTD.' established &  
Achieved ISM Certified by Class KR



**2023**  
Total four (4) Fleet  
Ave.14K Oil & Chemical Tanker  
management contract..

**2024 -1Q**  
12K Oil & Chemical Tanker  
management contract.  
(M/T ONSAN CHEMI)

**2024-2Q**  
ISO 9001 / 140001 / 45001  
Certification Acquisition  
Planned



**2026**  
Expected to be delivered  
14K Oil & Chemical  
Tanker.

GFSM FLEETS

We introduce our proud vessels of “GFSM CO., LTD. ”

"GFSM CO., LTD." is operating four (4) Oil & Chemical Tanker with a "SUNWOO TANKER CO., LTD." while carrying out a key role in the Oil & Chemical transportation industry, and trying its utmost efforts to leap forward as a global Oil & Chemical shipping company.

M/T BANGKOK CHEMI



BUILD YEAR	2006
TANK TYPE / COAT	II / SS 316L
FLAG	MARSHALL
DEADWEIGHT	14,383 MT
SERVICE ROUTE	EAST ASIA
CLASSFICATION	KR

M/T DAESAN CHEMI



BUILD YEAR	2004
TANK TYPE / COAT	II / SS 316L
FLAG	KOREA
DEADWEIGHT	12,705 MT
SERVICE ROUTE	EAST ASIA
CLASSFICATION	KR

M/T ONSAN CHEMI



BUILD YEAR	2009
TANK TYPE / COAT	II / SS 316L
FLAG	MARSHALL
DEADWEIGHT	12,358 MT
SERVICE ROUTE	EAST ASIA
CLASSFICATION	KR

M/T THAI CHEMI



BUILD YEAR	2006
TANK TYPE / COAT	II / SS 316L
FLAG	MARSHALL
DEADWEIGHT	14,351 MT
SERVICE ROUTE	EAST ASIA
CLASSFICATION	KR

# SAFETY MANAGEMENT

Safe Operation Management as First Value!  
We are conducting safe operation with systematic control of risks, a specialized affiliate in vessel management.

## SAFETY OPERATION

An internal management system (Operation, Maintenance and Inspection Management) is established to prevent any marine accidents.

### Operation Management

- Checking vessel movements.
- Providing local weather information through meteorological companies.
- Providing arrival notice and port information.
- Collecting and providing PSC information per calling port.
- Establishing emergency communication network for high risk area(HRA) and monitoring through an onshore watchdog system.

### Maintenance Management

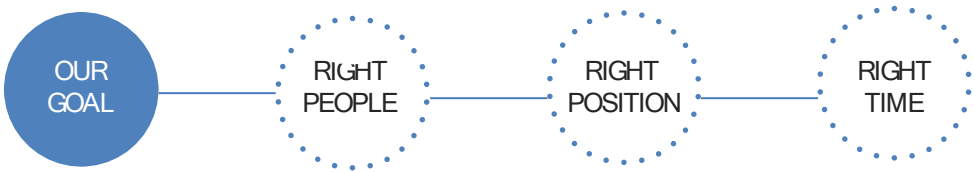
- Establishment and implementation of medium/long term maintenance plan for ships
- Periodic repairs
- Seaworthiness check for ships before departure and preventive maintenance.

### Inspection Management

- SIRE (Ship Inspection Report Programme)
- PSC (Port State Control)
- FSC (Flag State Control)
- Class
- Others

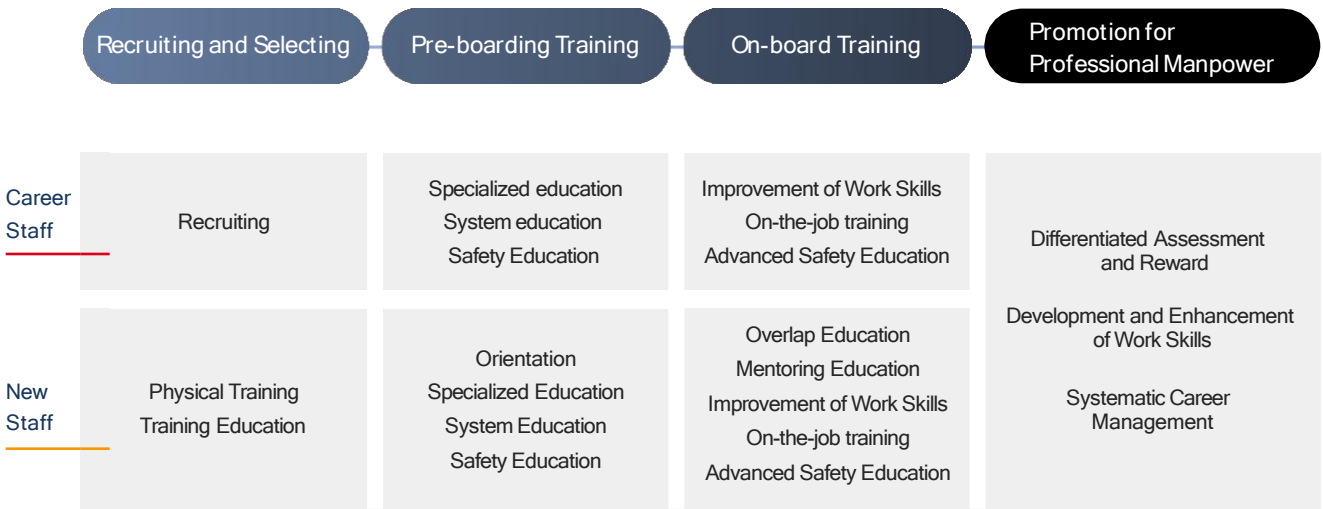
## PEOPLE & TRAINING

We promote safe operation through marine manpower infrastructure which was constructed by human resource development and raising awareness of crew safety



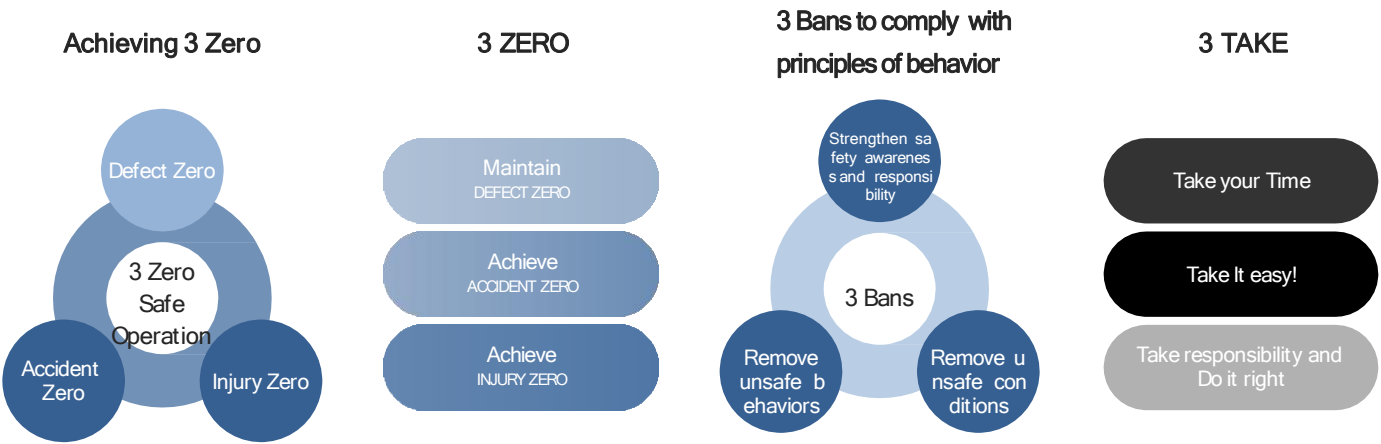
### Human Resources Development and Training

We are contributing to the achievement of safe operation of ships and continued quality management services by providing a systematic training for recruited/ s elected personnel to become professional maritime workers.



### Safety Campaign

Safety campaign 3 Zero 3 Bans Movement



# SHEQ

SHEQ (Safety-Health & Environment, Quality)  
We take the lead in safety and environmental protection by establishing and operating SHEQ policy and system.

# POLICY

We are complying with the related rules and regulations based on ESHQ policy which was established in order to preserve marine environment and secure safety of people and properties.

 Quality Policy

 Environment Policy

 Energy Conservation Policy

 Observed of all Rules and Regulations in all regions

 Safety and Health Policy

 Drug & Alcohol Policy

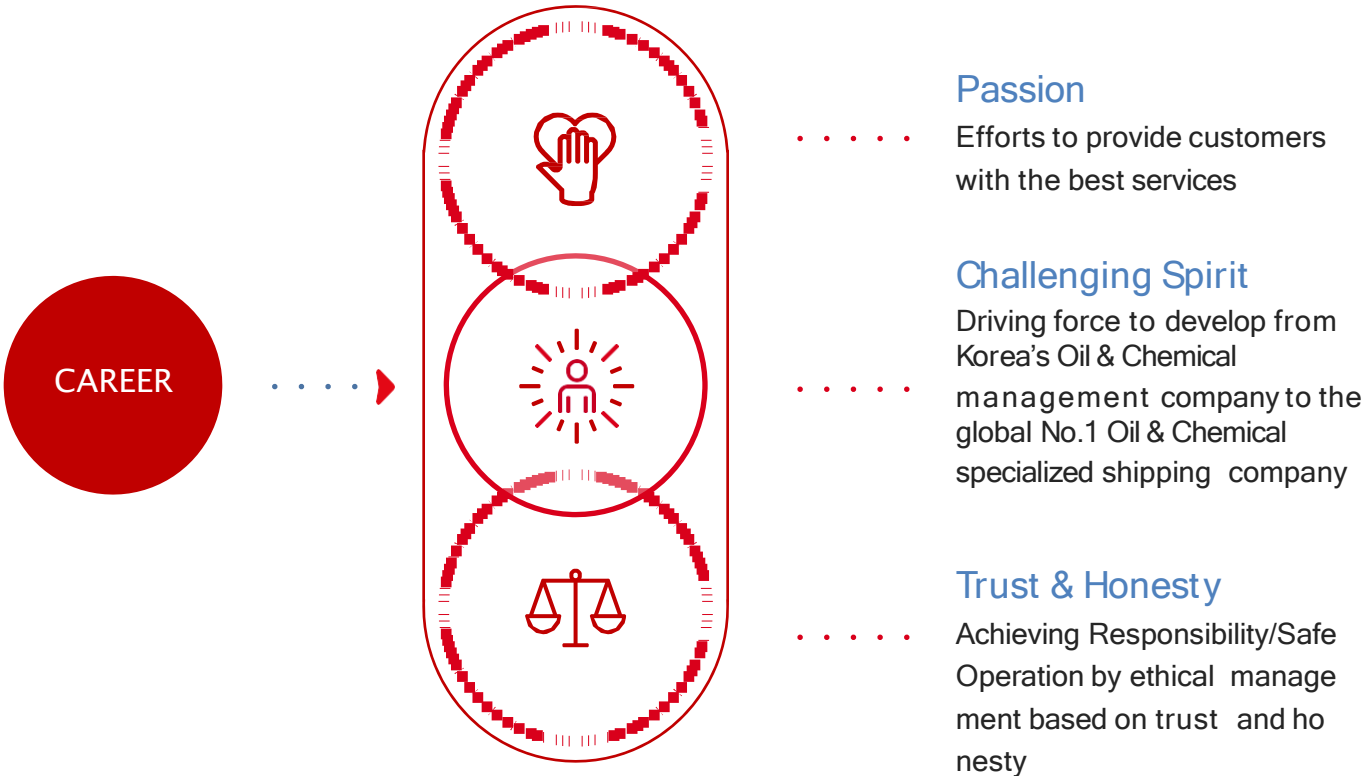
 Security Policy

# SHEQ SYSTEM

We are providing our customers with the best services through environmental protection and safe transportation of LNG, based on ISO 14001:2015, ISO 9001:2015, ISM/ISPS CODE and ISO 45001, MLC2006.



# IDEAL CANDIDATE



# CONTACT DETAIL



Add 2F Woongjae B/D, 292, Jungang-daero, Dong-gu, Busan, Republic of Korea [48730]

Tel +82-51-714-7059  
Fax +82-51-714-7057  
E-mail [gfsm@gfsm.co.kr](mailto:gfsm@gfsm.co.kr)

# ETHICAL MANAGEMENT

## Purpose

While carrying out ethical responsibility expected as social common notion as well as corporate economic and legal responsibilities are recognized as basic meanings of a company today, we have established [Ethical Management Practice Guidelines] which offers a reference to judgment and behavior of all our employees. It would make Korea Line LNG grow and develop with all the stakeholders, being a company to provide pleasure and benefit for customers based on clean corporate culture, a company in which shareholders want to invest, and a company which the employees are eager to work for.

## Ethical Management

Believing that ethics is the first value in managing the company, and putting the judgment standards of all the corporate behaviors on

ethical codes, we, employees and stakeholders, will practice businesses on a fair and transparent basis as a management principle, to make the company develop further.

## The Necessity of Ethical Management

**Ethical Management is not an option, but a prerequisite for survival.**

First, ethical management can contribute to gaining continuous trust from the market by playing a proper role and activities.

Second, ethical management has a positive effect on the business performance.

Third, it is the time for ethical management to emerge as a top priority in terms of global standards to evaluate corporate global competitiveness.

